

# Coronavirus (COVID-19) Information

## Update 6: March 19, 2020

Good afternoon,

Today Governor Murphy ordered, effective 8PM tonight, the closure of all personal-care businesses which cannot comply with social distancing guidelines – including barber shop and hair salons, spas, nail and eyelash salons, tattoo parlors – and social clubs, until further notice.

While [E.O. 104](#) remains in effect for the entire state of New Jersey and it is our understanding that it supersedes all local and county orders, we are starting to see once again some local orders that are not as clear, and are mandating an 8PM curfew.

For example, "[Mayor Ras J. Baraka announced a further series of sweeping measures to address the threat of Coronavirus \(COVID-19\) in the City of Newark](#), which include a mandatory 8 p.m. curfew, the closing of non-essential businesses by 8 p.m. tonight until further notice, and City Hall services offered to residents there by appointment only. A list of the new measures follows, in which compliance will be enforced."

CCNJ is trying to get clarification about this order, but OEM reassured CCNJ this afternoon, that as of right now, the state does not have a travel ban in place, so limiting travel is a suggestion not a crime. The Newark Order also states that the "curfew is mandatory after 8 p.m., unless there's an emergency or you are coming from/going to work."

Any member company experiencing issues with a local or county order, please contact Ed Waters ([ewaters@chemistrycouncilnj.org](mailto:ewaters@chemistrycouncilnj.org)), and CCNJ will try and assist with your issue.

**While we realize many of our member companies are not able to allow most of their employees to tele-work, we strongly recommend, if you haven't already, to put into effect a telework policy immediately for those who can work from home.**

As a reminder, [E.O. 104](#) states that the occupancy limit does not apply to normal operations at office environments, factories, assemblages for the purpose of industrial or manufacturing work. And OEM confirms that currently there are no restrictions on manufacturing facilities and critical infrastructure operations.

**This afternoon the Cybersecurity and Infrastructure Security Agency (CISA) [released guidance](#) to help state and local jurisdictions and the private sector identify and manage their essential workforce while responding to COVID-19. We encourage member companies to review the guidance, and if something is missing, please let us know. While NJ has identified critical infrastructure in the NJ Domestic Security Preparedness Act, CISA is encouraging all states to refer to this guidance.**

CCNJ has compiled an exhaustive list of regulatory items industry would need extension and/or waivers for considering the COVID-19 situation. Sam Jones is finalizing the document, and Dennis Hart will be sharing our requests with the administration and legislators.

**Clarification of the Private Sector Essential Employee Registration Project.** While CCNJ can submit new critical infrastructure companies to OEM for consideration, it is not a guarantee. Also, this program is only for critical infrastructure sites, not service companies. If your company is providing a service to a critical infrastructure site that is part of the program, that company would need to designate the service company employee as a temporary essential employee via their company ID. OEM will not accept service firms at this time. OEM has begun reaching out to the companies CCNJ has submitted, some are on hold pending criteria approval from State Police. We ask for everyone's patience with this if you have submitted your request and haven't heard from OEM. They are trying to get to all requests as soon as they can. We've submitted 12 companies and sending at least two more today.

We suggest that you continue to remind your employees to have their work ID accessible while driving to and from work, so they can present it with their license if necessary.

We have provided the [image link below](#) to the COVID-19/Novel Coronavirus Information for New Jersey Businesses. It is a great resource for all businesses with questions or that may need clarification on an issue. They have updated the site, and you are now able to submit a question via the chat function on their page or call 1-800-JERSEY-7 between (8am–9pm).

If there are any issues or concerns, we are not addressing in these updates, please do not hesitate to contact CCNJ staff about them. We have been working diligently with state and local officials, including members of both the New Jersey Legislature and U.S. Congress to identify ways that they can be helpful to the business of chemistry during this time.

Below you will find new information **highlighted in blue** added since the last update.

[To access previous updates click here.](#)

Learn what precautions you can take about the **Coronavirus**  
Call the **NJ Coronavirus & Poison Center Hotline** at  
**1-800-222-1222** or **1-800-962-1253** if using out-of-state phone line  
Trained healthcare professionals are standing by to answer your call **24/7** OR  
visit [nj.gov/health](http://nj.gov/health)

**In support of ongoing COVID-19 efforts, the State Emergency Operations Center has made available an ESF 7 Remote Access Line for private sector inquiries. ESF 7 Remote Access Line: 609-963-6817. For response and resource related requests, OHSP encourages you to work with your local first responder agencies, or your County Office of Emergency Management. [Click here to access the NJOEM County Coordinators directory](#) to find contact information for the local county OEM where your facility is located.**

# COVID-19 UPDATE

## NEW COVID-19 RESOURCES PORTAL FOR ALL BUSINESSES:

[cv.business.nj.gov](http://cv.business.nj.gov)



### New Jersey COVID-19 Dashboard

NJ COVID-19 Dashboard Updated as of 3/19/2020 12PM

#### COVID-19 Cases by County

Data is provisional and subsequent to revision.  
118 Positives Pending Further Information

**Bergen County:**  
195 Positive Test Result(s)

**Middlesex County:**  
64 Positive Test Result(s)

**Essex County:**  
63 Positive Test Result(s)

**Hudson County:**  
55 Positive Test Result(s)

**Monmouth County:**  
43 Positive Test Result(s)

**Passaic County:**  
38 Positive Test Result(s)

**Ocean County:**  
33 Positive Test Result(s)

**Union County:**  
29 Positive Test Result(s)

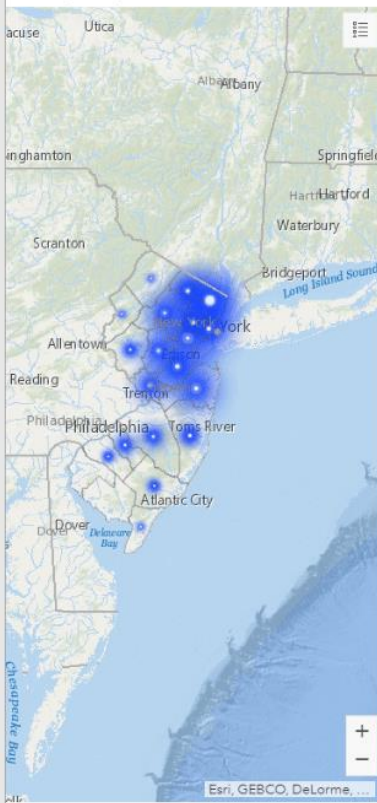
**Morris County:**  
26 Positive Test Result(s)

**Somerset County:**  
21 Positive Test Result(s)

**Mercer County:**  
20 Positive Test Result(s)

**Burlington County:**

Cases by County:



Click county to see details.

**New Jersey  
Positives**

**742**

**New Jersey  
Deaths**

**9**

**Hotline Calls**

Calls in Past 24 Hours

**520**

211 Calls

**426**

Since March 18

Total Calls To Date

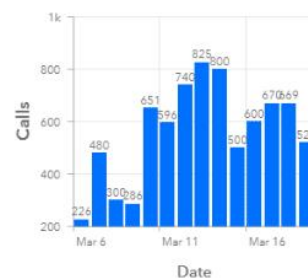
**9,143**

211 Texts

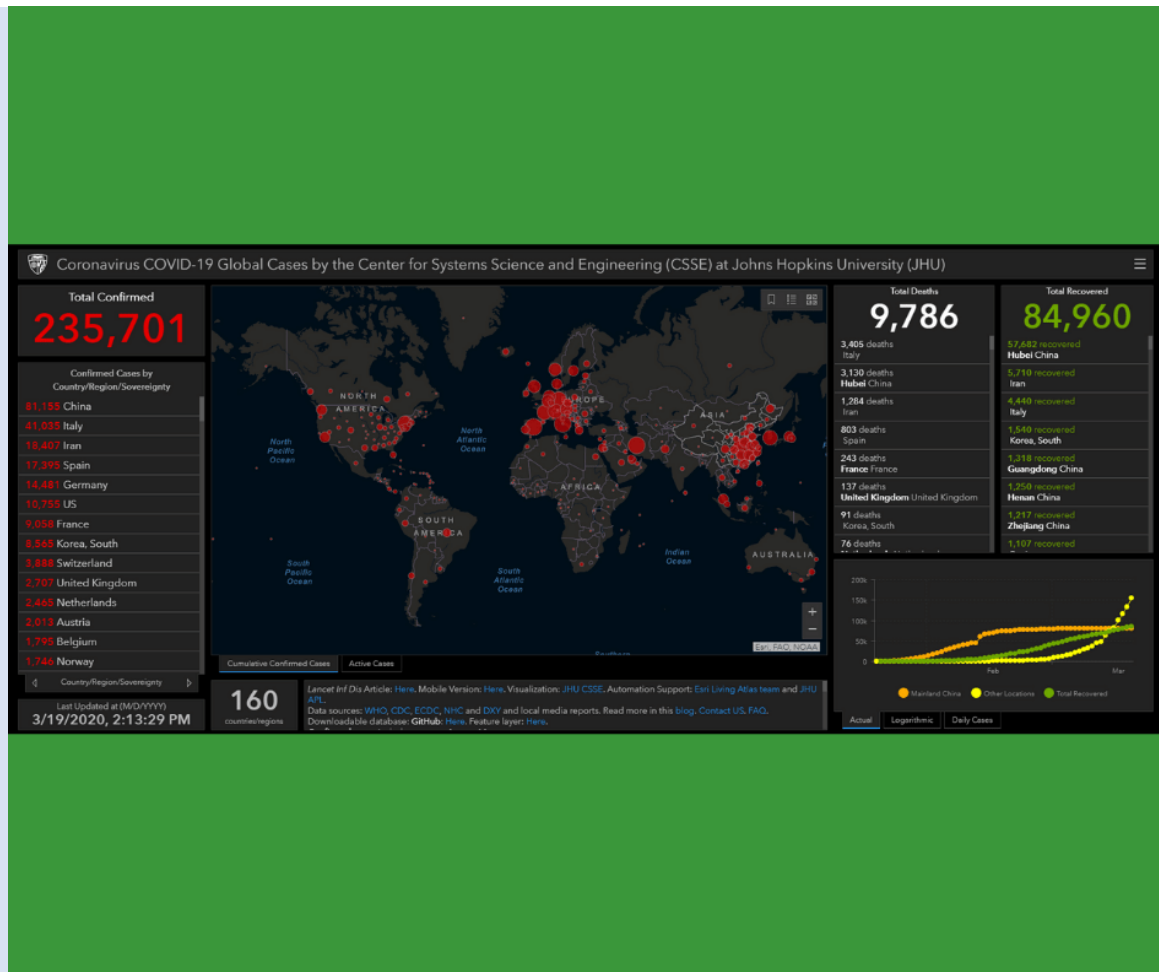
**8,489**

Since March 18

#### Calls/Day to COVID-19 Hotline



### Global COVID-19 Dashboard with Total Recovery



## **New Jersey Governor Updates**

### **TRANSCRIPT: March 18th, 2020 Coronavirus Briefing Media**

We received 162 new positive test results. Two cases, if I get this wrong Judy will correct me – two cases that were reported yesterday and which were under further investigation turned out both to be out of state residents. So, they are now being removed from our count and our statewide total is now 427. So, this is increasing with a pretty steep curve as we had expected. And again, you’ve got a combination of a couple of things that we have already previewed. Number one, you’ve got some amount of community interaction and spread as part of this; and importantly, a lot more people are getting tested. And I’m happy to say that as of this Friday there will be another big opportunity for folks to get tested, and Judy will get into the details of that.

[Click here to read more](#)

### **Governor Murphy Announces Changes to Upcoming New Jersey Elections in Response to COVID-19**

Governor Phil Murphy today signed Executive Order No. 105, implementing changes to upcoming elections to further mitigate the spread of COVID-19 and ensure that voters can exercise their right to vote without risking their health and safety. The executive order temporarily changes certain election procedures and changes the date of upcoming elections in an effort to protect voters and ensure fairness to candidates during this unprecedented crisis.

[Click here for release](#)

## CISA RELEASES GUIDANCE ON ESSENTIAL CRITICAL INFRASTRUCTURE WORKERS DURING COVID-19

### IDENTIFYING CRITICAL INFRASTRUCTURE DURING COVID-19



There are 16 critical infrastructure sectors whose assets, systems, and networks, whether physical or virtual, are considered so vital to the United States that their incapacitation or destruction would have a debilitating effect on security, national economic security, national public health or safety, or any combination thereof. Presidential Policy Directive 21 (PPD-21); PPD-21 identifies 16 critical infrastructure sectors.

Please direct additional questions to [CISA.CAT@cisa.dhs.gov](mailto:CISA.CAT@cisa.dhs.gov).

[Download a PDF version of this Guidance](#)

### CORONAVIRUS CLOSURES

[Coronavirus in New Jersey: What's open, what's closed? Restaurants, stores, banks, mail delivery, malls, UPS, gyms, schools \(03/19/2020\)](#)

With the virus spreading rapidly, state officials closed or placed restrictions on establishments and institutions across the [Garden State](#).

[Click here to read more](#)

### CDC (COVID-19) Situation Summary Updated Regularly

[Interim Guidance for Businesses and Employers](#)

Plan, Prepare and Respond to Coronavirus Disease 2019

[Click here for CDC Business Guidance](#)

[White House: 15 Days To Slow The Spread](#)

The President's Coronavirus Guidelines for America -- 15 Days to Slow the Spread of Coronavirus (COVID-19)

[Click here for White House Document](#)

[Coronavirus Disease 2019 \(COVID-19\) Situation Summary](#)

CDC is responding to an outbreak of respiratory disease caused by a novel (new) coronavirus that was first detected in China and which has now been detected in more than 100 locations internationally, including in the United States. The virus has been named "SARS-CoV-2" and the disease it causes has been named "coronavirus disease 2019" (abbreviated "COVID-19").

[Click here for CDC Situation Summary](#)

#### [Get Your Mass Gatherings or Large Community Events Ready Interim Guidance for Coronavirus Disease 2019 \(COVID-19\)](#)

CDC, in accordance with its guidance for [large events and mass gatherings](#), recommends that for the next 8 weeks, organizers (whether groups or individuals) cancel or postpone in-person events that consist of 50 people or more throughout the United States.

[Click here for CDC Guidance](#)

### **CCNJ 36<sup>th</sup> Annual Spring Conference**

Based on the CDC guidance and uniform standards announced by Governor Murphy, we can no longer hold our conference on April 27-28, 2020. We are still working out details with The Ocean Hotel and Seaview Golf Club. At this time, we cannot confirm if we are postponing or canceling the 2020 conference. We will send out information once we reach an understanding with the hotel and golf club. At that time, we will communicate options to those who have already committed to sponsoring and exhibiting at the 36<sup>th</sup> Annual Conference.

### **CCNJ COVID-19 IMPACT POLL**

To better serve our members during this time we have put together a [COVID-19 Impact Poll](#). The information being gathered will help us better inform the government, particularly the NJ Office of Emergency Management, about the essential products you make and allow us to better assess the potential impact of COVID-19 on your operations and anticipate any needs. Please, take 5-8 minutes to [complete the survey](#). **Hopefully you can [complete the survey](#) by Wednesday, March 18.** We will share the results with the Board of Directors at the next Board meeting, and the full membership by Friday.

[Click here to complete survey](#)

### **HIPAA Privacy, Labor Laws & CDC Reporting Form**

#### [Office for Civil Rights, U.S. Department of Health and Human Services BULLETIN: HIPAA Privacy and Novel Coronavirus](#)

In light of the Novel Coronavirus (2019-nCoV) outbreak, the Office for Civil Rights (OCR) at the U.S. Department of Health and Human Services (HHS) is providing this bulletin to ensure that HIPAA covered entities and their business associates are aware of the ways that patient information may be shared under the HIPAA Privacy Rule in an outbreak of infectious disease or other emergency situation, and to serve as a reminder that the protections of the Privacy Rule are not set aside during an emergency.

[Click here for February 2020 Bulletin](#)

#### [Human Infection with 2019 Novel Coronavirus Person Under Investigation \(PUI\) and Case Report Form](#)

CDC Personal Under Investigation Form

[Click here for Reporting Form](#)

[NJDOLE Benefits and the Coronavirus \(COVID-19\): What You Should Know](#)

New Jersey has among the most comprehensive [Earned Sick Leave](#), [Temporary Disability](#) and [Family Leave Insurance](#) laws in the country, which cover all employees – full-time, part-time, temporary and seasonal.

<https://www.nj.gov/labor/worker-protections/earnedsick/covid.shtml>

## **New Jersey & Other Government Resources**

- [OSHA Guidance on Preparing Workplaces for COVID-19](#)  
To reduce the impact of COVID-19 outbreak conditions on businesses, workers, customers, and the public, it is important for all employers to plan now for COVID-19. [Click here for OSHA Guidance](#)
- [COVID-19: Information for Schools and Businesses](#)  
To prepare for possible community transmission of COVID-19, the most important thing for schools to do now is plan and prepare. As the global outbreak evolves, schools should prepare for the possibility of community-level outbreaks. Schools want to be ready if COVID-19 does appear in their communities. [https://www.nj.gov/health/cd/topics/covid2019\\_schoolbusiness.shtml](https://www.nj.gov/health/cd/topics/covid2019_schoolbusiness.shtml)
- [New Jersey Department of Health COVID-19: A Guide for Businesses March 2, 2020](#)  
Many employers and businesses in New Jersey are concerned about the current outbreak of the 2019 Novel Coronavirus (COVID-19) and potential impacts to their business communities and wish to take appropriate steps to mitigate any risks. The Centers for Disease Control and Prevention (CDC) is working hard to learn as much as possible about this COVID-19 so that we can better understand how it spreads and characterize its associated illness. The New Jersey Department of Health is also working hard to develop guidance and education materials, in the face of evolving information. [https://www.nj.gov/health/cd/documents/topics/NCOV/Guide%20for%20businesses\\_3-4-2020.pdf](https://www.nj.gov/health/cd/documents/topics/NCOV/Guide%20for%20businesses_3-4-2020.pdf)
- [Directory of Local Health Departments](#)  
Suspected cases should be reported IMMEDIATELY to the local health department (LHD) where the patient resides. If the patient's residence is unknown, report to your own local health department. Local health departments are available 24/7/365. <https://www.nj.gov/health/lh/documents/LocalHealthDirectory.pdf>
- [Interim Exposure Categories for Asymptomatic Individuals with Possible Exposure to COVID-2019](#)  
This interim guidance is effective as of February 3, 2020 and does not apply retrospectively to people who have been in China during the previous 14 days and are already in the United States, or those being managed as part of a contact investigation. [Click here for guidance document](#)
- [Keeping the workplace safe Encourage your employees to](#)  
What every American and community can do now to decrease the spread of the coronavirus [Click here for infographics](#)
- [Implementation of Mitigation Strategies for Communities with Local COVID-19 Transmission](#)

When a novel virus with pandemic potential emerges, nonpharmaceutical interventions, which will be called community mitigation strategies in this document, often are the most readily available interventions to help slow transmission of the virus in communities.

[Click here for CDC Mitigation Strategies](#)

## Industry and Related Resources

- [Pfizer and BioNTech to Co-Develop Potential COVID-19 Vaccine](#)  
Pfizer Inc. (NYSE: PFE, “Pfizer”) and BioNTech SE (Nasdaq: BNTX, “BioNTech”) today announced that the companies have agreed to a letter of intent regarding the co-development and distribution (excluding China) of a potential mRNA-based coronavirus vaccine aimed at preventing COVID-19 infection. The companies have executed a Material Transfer and Collaboration Agreement to enable the parties to immediately start working together.  
[Click here for release](#)
- [BD, BioGX Announce FDA Emergency Use Authorization Submissions for New COVID-19 Diagnostics for Use in U.S.](#)  
New Diagnostics Have Potential to Increase Capacity of COVID-19 Testing in U.S. by Thousands of Tests Per Day  
[Click here for release](#)
- [FDA Issued Emergency Use Authorization to Thermo Fisher Scientific for Diagnostic Test Used to Detect COVID-19](#)  
Thermo Fisher Scientific Inc. (NYSE: TMO), the world leader in serving science, announced that on March 13, 2020, the U.S. Food and Drug Administration (FDA) issued an emergency use authorization (EUA) for its diagnostic test that can be used immediately by CLIA high-complexity laboratories in the U.S. to detect nucleic acid from SARS-CoV-2, the virus that causes COVID-19, and not for any other viruses or pathogens.  
[Click here for release](#)