

Coronavirus (COVID-19) Information

Update 3: March 16, 2020

Good afternoon,

Today Governor Murphy announced [uniform standards for crowds and social gatherings](#) with the states of New York and Connecticut, beginning at 8 p.m. on Monday, March 16, 2020.

- Effective March 18, all pre-K, K-12 schools, and institutions of higher education must close.
- **Beginning tonight, all non-essential and non-emergency travel in New Jersey is strongly discouraged between the hours of 8PM. and 5AM.***
- Beginning tonight, all non-essential retail, recreational, and entertainment businesses must close each night after 8PM until further notice. These businesses must limit occupancy to no more than 50 persons during daytime hours.
- Effective at 8PM tonight, all bars and restaurants must close for eat-in services. Bars and restaurants may stay open for takeout and delivery orders only until further notice.
- Effective at 8PM tonight, all racetracks, casinos, theaters, and gyms must close until it is deemed safe for their re-opening.
- Effective at 8PM tonight, all public events of 50 persons or more are to be cancelled.

Only businesses that match one of these types, should prepare to comply with these new rules, which go into effect at 8PM on Monday, March 16, 2020.

***While all non-essential and non-emergency travel in New Jersey between the hours of 8PM and 5AM is strongly discouraged, it is NOT A BAN ON TRAVEL. The government understands that not all employees can work from home and driving to and from a facility for work shifts is allowed.**

There is no mention of manufacturing facilities, chemical plants or critical infrastructure at this time. Should an enforceable travel ban be put in place, it would be accompanied by an order with more details and exemptions.

CCNJ is still waiting to see if OEM will allow new companies to enter the Private Sector Essential Employee Registration Project. We suggest that each facility start identifying the employees they will need to continue operations and make sure you have the following information for each:

- Full Name
- Date of Birth (Month/Day/Year)
- Driver's License Number (where applicable)
- Company ID number [This is provided once registered]
- Contact Phone Number

- E-mail address

It is important to remind your employees to have their work ID accessible while driving to and from work, so they can present it with their license if necessary.

In support of ongoing COVID-19 efforts, the State Emergency Operations Center has made available an ESF 7 Remote Access Line for private sector inquiries. ESF 7 Remote Access Line: 609-963-6817. For response and resource related requests, OHSP encourages you to work with your local first responder agencies, or your County Office of Emergency Management.

[Click here to access the NJOEM County Coordinators directory](#) to find contact information for the local county OEM where your facility is located. You may also want to access your local county OEM website for specific information for your area.

The state has set-up a [business specific FAQ page](#). We recommend that you [bookmark the site](#) and refer to it regularly, as it provides many answers to questions you may have.

Starting Monday, March 16, 2020 the CCNJ staff will be teleworking from home in response to the COVID-19 pandemic. If you need to reach an individual staff person, please email them directly. Should you need to speak to any staff person, they will provide their cell number upon request.

Below you will find new information [highlighted in blue](#) added since the last update.

[To access previous updates click here.](#)

Learn what precautions you can take about the **Coronavirus**
Call the **NJ Coronavirus & Poison Center Hotline** at
1-800-222-1222 or **1-800-962-1253** if using out-of-state phone line
Trained healthcare professionals are standing by to answer your call **24/7** OR
visit nj.gov/health

COVID-19 UPDATE

NEW COVID-19 RESOURCES PORTAL
FOR ALL BUSINESSES:

cv.business.nj.gov



New Jersey COVID-19 Dashboard

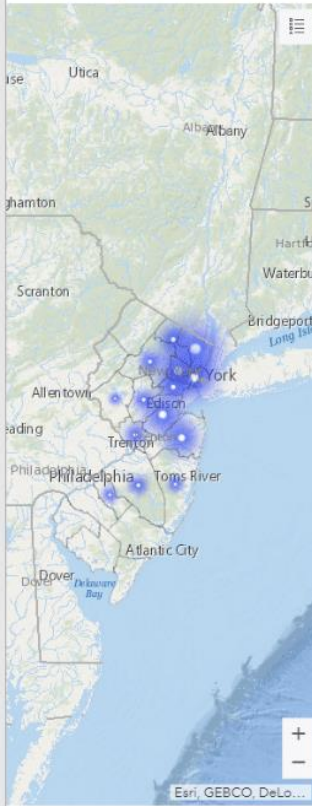
NJ COVID-19 Dashboard Updated as of 3/16/2020 2PM

COVID-19 Cases by County

Data is provisional and subsequent to revision.

Bergen County:	61 Positive Test Result(s)
Essex County:	20 Positive Test Result(s)
Hudson County:	19 Positive Test Result(s)
Middlesex County:	17 Positive Test Result(s)
Monmouth County:	14 Positive Test Result(s)
Passaic County:	8 Positive Test Result(s)
Union County:	8 Positive Test Result(s)
Mercer County:	6 Positive Test Result(s)
Morris County:	6 Positive Test Result(s)
Burlington County:	5 Positive Test Result(s)
Somerset County:	5 Positive Test Result(s)
Camden County:	5 Positive Test Result(s)

Cases by County:



Click county to see details.

Testing Results

New Jersey Positives

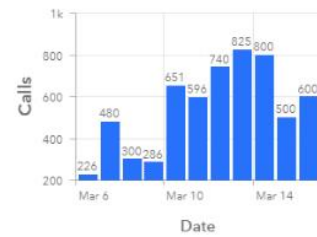
178

Hotline Calls

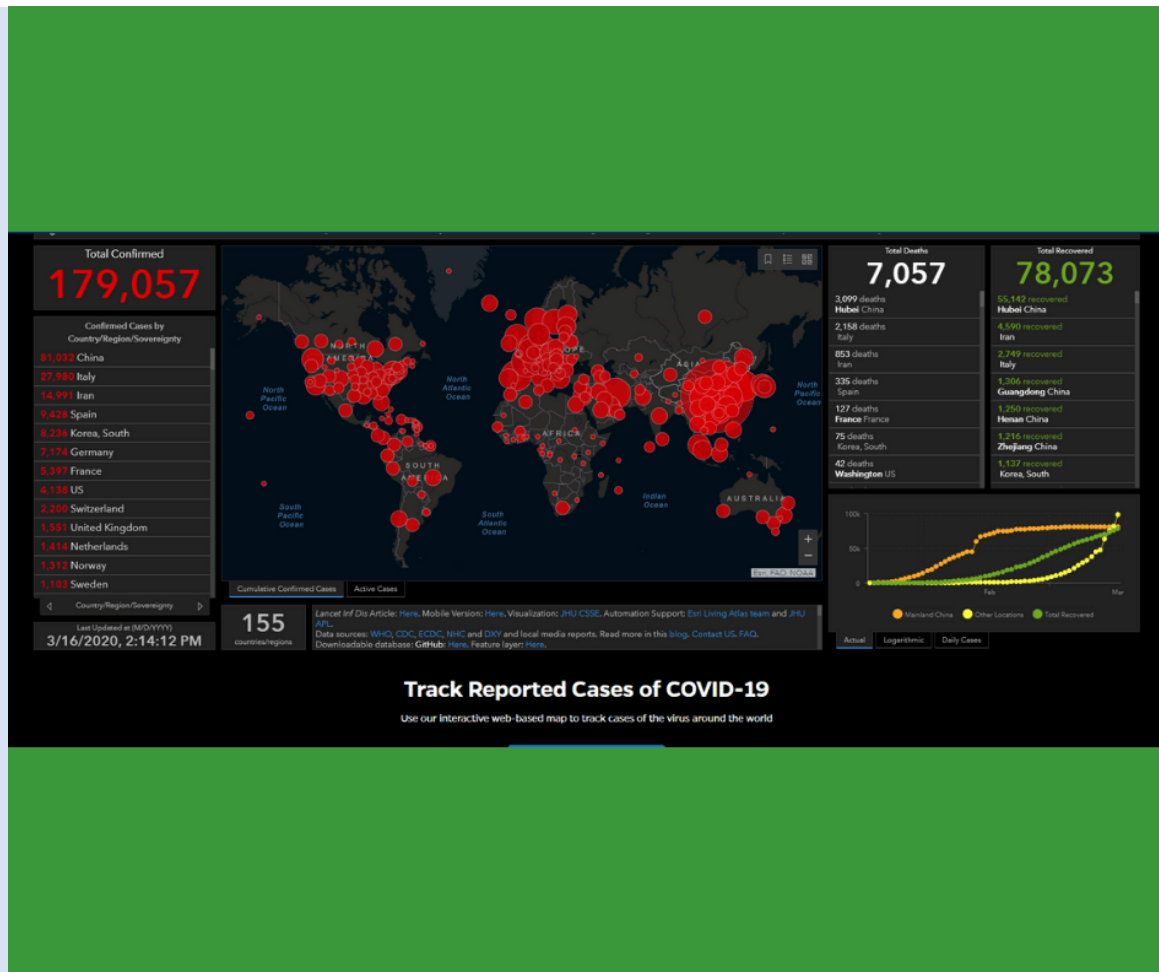
Calls in Past 24 Hours Total Calls To Date

600 **7,284**

Calls/Day to COVID-19 Hotline



Global COVID-19 Dashboard with Total Recovery



New Jersey Governor Updates

[Governor Murphy Announces Aggressive Social Distancing Measures to Mitigate Further Spread of COVID-19 in New Jersey](#)

Governor Phil Murphy today signed Executive Order No. 104, implementing aggressive social distancing measures to mitigate further spread of COVID-19 in New Jersey. Among the directives, Governor Murphy's Executive Order indefinitely closes all public and private preschool, elementary and secondary schools, and institutions of higher education, as well as closes all casinos, racetracks, gyms, movie theaters, and performing arts centers. The order also mandates that all non-essential retail, recreational, and entertainment businesses must cease daily operations from 8:00 p.m. to 5:00 a.m. All restaurant establishments, with or without a liquor license, are limited to offering only delivery and/or take out-services only, both during daytime hours and after 8 pm.

[Click here for release](#)

[Amid Lack of Federal Direction, Governor Murphy, Governor Cuomo, and Governor Lamont Announce Regional Approach to Combatting COVID-19](#)

The three States will limit crowd capacity for recreational and social gatherings to 50 people - effective by 8 PM tonight

[Click here for release](#)

[ICYMI: MVC Announces Closure for Two Weeks Due to COVID-19](#)

New Jersey Motor Vehicle Commission Chief Administrator Sue Fulton has announced that all New Jersey Motor Vehicle Commission agency and road testing facilities will be closed effective immediately as a measure to mitigate the spread of COVID-19. We anticipate re-opening in two weeks, on Monday, March 30, 2020.

[Click here for release](#)

[ICYMI: Open Spaces at State Parks and Wildlife Management Areas Available for Passive Recreation; Enclosed Facilities, Campgrounds at State Parks, Forests, and Recreation Areas Closed](#)

Department of Environmental Protection Commissioner Catherine R. McCabe announced today that public may still access the State Parks, forests, recreation areas and Wildlife Management Areas, including roads, parking areas, trails, lakes and other open space areas for healthful passive recreation. However, campgrounds, visitor centers, nature centers, restrooms and similar facilities at state parks, forests, recreation areas, Wildlife Management Areas and historic sites are closed until further notice in order to protect public health and safety as the state works to address COVID-19.

[Click here for release](#)

[TRANSCRIPT: March 15th, 2020 Coronavirus Briefing Media](#)

Since yesterday's briefing we have received 31 new positive test results and that brings our cumulative statewide total at this moment to 98. And Judy will provide the details on these cases. Let me just say this, that the 98 includes 2 fatalities – the original loss of life in Bergen County and then the blessed woman we announced last evening from Monmouth County. And last evening's fatality is included in the number 31. And then, as Judy will probably tell you we had one overlap with another state and one duplicate. So, if you're doing the math from yesterday to today, that explains why we are now cumulatively at 98 positive test results in the state, again, 2 of whom sadly are fatalities.

[Click here for transcripts](#)

CDC (COVID-19) Situation Summary Updated Regularly

[Coronavirus Disease 2019 \(COVID-19\) Situation Summary](#)

CDC is responding to an outbreak of respiratory disease caused by a novel (new) coronavirus that was first detected in China and which has now been detected in more than 100 locations internationally, including in the United States. The virus has been named "SARS-CoV-2" and the disease it causes has been named "coronavirus disease 2019" (abbreviated "COVID-19").

[Click here for CDC Situation Summary](#)

[Get Your Mass Gatherings or Large Community Events Ready Interim Guidance for Coronavirus Disease 2019 \(COVID-19\)](#)

CDC, in accordance with its guidance for [large events and mass gatherings](#), recommends that for the next 8 weeks, organizers (whether groups or individuals) cancel or postpone in-person events that consist of 50 people or more throughout the United States.

[Click here for CDC Guidance](#)

CCNJ 36th Annual Spring Conference

Based on the CDC guidance and uniform standards announced by Governor Murphy, we can no longer hold our conference on April 27-28, 2020. We are still working out details with The Ocean Hotel and Seaview Golf Club. At this time, we cannot confirm if we are postponing or canceling the 2020 conference. We will send out information once we reach an understanding with the hotel and golf club. At that time, we will communicate options to

those who have already committed to sponsoring and exhibiting at the 36th Annual Conference. We hope to have more information later this week.

CCNJ COVID-19 IMPACT POLL

To better serve our members during this time we have put together a [COVID-19 Impact Poll](#). The information being gathered will help us better inform the government, particularly the NJ Office of Emergency Management, about the essential products you make and allow us to better assess the potential impact of COVID-19 on your operations and anticipate any needs. Please, take 5-8 minutes to [complete the survey](#). **Hopefully you can [complete the survey](#) by Wednesday, March 18.** We will share the results with the Board of Directors at the next Board meeting, and the full membership by Friday.

[Click here to complete survey](#)

HIPAA Privacy, Labor Laws & CDC Reporting Form

[Office for Civil Rights, U.S. Department of Health and Human Services BULLETIN: HIPAA Privacy and Novel Coronavirus](#)

In light of the Novel Coronavirus (2019-nCoV) outbreak, the Office for Civil Rights (OCR) at the U.S. Department of Health and Human Services (HHS) is providing this bulletin to ensure that HIPAA covered entities and their business associates are aware of the ways that patient information may be shared under the HIPAA Privacy Rule in an outbreak of infectious disease or other emergency situation, and to serve as a reminder that the protections of the Privacy Rule are not set aside during an emergency.

[Click here for February 2020 Bulletin](#)

[Human Infection with 2019 Novel Coronavirus Person Under Investigation \(PUI\) and Case Report Form](#)

CDC Personal Under Investigation Form

[Click here for Reporting Form](#)

[NJDOLE Benefits and the Coronavirus \(COVID-19\): What You Should Know](#)

New Jersey has among the most comprehensive [Earned Sick Leave](#), [Temporary Disability](#) and [Family Leave Insurance](#) laws in the country, which cover all employees – full-time, part-time, temporary and seasonal.

<https://www.nj.gov/labor/worker-protections/earnedsick/covid.shtml>

New Jersey & Other Government Resources

- [COVID-19: Information for Schools and Businesses](#)

To prepare for possible community transmission of COVID-19, the most important thing for schools to do now is plan and prepare. As the global outbreak evolves, schools should prepare for the possibility of community-level outbreaks. Schools want to be ready if COVID-19 does appear in their communities.

https://www.nj.gov/health/cd/topics/covid2019_schoolbusiness.shtml

- [New Jersey Department of Health COVID-19: A Guide for Businesses March 2, 2020](#)

Many employers and businesses in New Jersey are concerned about the current outbreak of the 2019 Novel Coronavirus (COVID-19) and potential impacts to their business communities and wish to take appropriate steps to mitigate any risks. The Centers for Disease Control and Prevention (CDC) is working hard to learn as much as possible about this COVID-19 so that we can better understand how it spreads and characterize its associated illness. The New Jersey Department of Health is also working hard to develop guidance and education materials, in the face of evolving information.

https://www.nj.gov/health/cd/documents/topics/NCOV/Guide%20for%20businesses_3-4-2020.pdf

- [Directory of Local Health Departments](#)

Suspected cases should be reported IMMEDIATELY to the local health department (LHD) where the patient resides. If the patient's residence is unknown, report to your own local health department. Local health departments are available 24/7/365.

<https://www.nj.gov/health/lh/documents/LocalHealthDirectory.pdf>

- [Interim Exposure Categories for Asymptomatic Individuals with Possible Exposure to COVID-2019](#)

This interim guidance is effective as of February 3, 2020 and does not apply retrospectively to people who have been in China during the previous 14 days and are already in the United States, or those being managed as part of a contact investigation.

[Click here for guidance document](#)

- [Keeping the workplace safe Encourage your employees to](#)

What every American and community can do now to decrease the spread of the coronavirus

[Click here for infographics](#)

- [Implementation of Mitigation Strategies for Communities with Local COVID-19 Transmission](#)

When a novel virus with pandemic potential emerges, nonpharmaceutical interventions, which will be called community mitigation strategies in this document, often are the most readily available interventions to help slow transmission of the virus in communities.

[Click here for CDC Mitigation Strategies](#)

Industry and Related Resources

- [Roche's cobas SARS-CoV-2 Test to detect novel coronavirus receives FDA Emergency Use Authorization and is available in markets accepting the CE mark](#)

Roche (SIX: RO, ROG; OTCQX: RHHBY) today announced that the U.S. Food and Drug Administration (FDA) has issued an Emergency Use Authorization (EUA) for the cobas® SARS-CoV-2 Test. It is intended for the qualitative detection of SARS-CoV-2, the virus that causes COVID-19 disease, in nasopharyngeal and oropharyngeal swab samples from patients who meet COVID-19 clinical and/or epidemiological criteria for testing. Hospitals and reference laboratories can run the test on Roche's fully automated cobas® 6800 and cobas® 8800 Systems, which are widely available in the U.S. and around the world.

[Click here for Roche Release](#)

- [PFIZER OUTLINES FIVE-POINT PLAN TO BATTLE COVID-19](#)

Pfizer today issued a five-point plan calling on the biopharmaceutical industry to join the company in committing to unprecedented collaboration to combat COVID-19.

[Click here for Pfizer Release](#)

- [Focusing on people, product during the coronavirus outbreak](#)

In Aberdeen, South Dakota, Tim Hofer stood in front of a production line that was turning out thousands of 3M N95 respirators. The plant was running around the clock in response to the coronavirus outbreak – and the resulting global demand for respirators.
[Click here for 3M Release](#)

- [Public health campaign launched to fightback against COVID-19 'Infodemic'](#)
A new public health information campaign, launched by Dettol and Lysol, is assessing and evaluating claims related to COVID-19, correct misinformation, challenge misperceptions and debunk common myths.
[Click here for RB Release](#)
- [Committed to Developing Solutions for COVID-19](#)
PhRMA and senior executives and researchers from four member companies met with key policy makers on Capitol Hill to discuss the industry's response to COVID-19, caused by a novel strain of coronavirus.
<https://www.phrma.org/Coronavirus>
- [Helping those Affected by the Coronavirus](#)
America's biopharmaceutical companies are committed to developing solutions to help diagnose and treat those with COVID-19, caused by a novel strain of coronavirus that originated in Wuhan, China.
[Click here for PHRMA Fact Sheet](#)
- [Biotech Response to COVID-19](#)
As the threat of the novel coronavirus continues to grow globally, innovative biopharmaceutical companies are ramping up efforts to study the virus and develop vaccines and cures to protect individuals from contracting the virus.
[Click here for BIO COVID-19 Response](#)
- [COVID-19 RESOURCES FOR THE SPECIALTY CHEMICAL INDUSTRY](#)
Over the past couple of weeks, SOCMA has proactively monitored reports about COVID-19 and has worked with SOCMA members to understand and deliver guidance on the industry's response and action plans.
[Click here for SOCMA COVID-19 Resources](#)
- [Novel Coronavirus \(COVID-19\)—Fighting Products The American Chemistry Council's \(ACC\) Center for Biocide Chemistries \(CBC\)](#) has compiled a list of products that have been pre-approved by the U.S. Environmental Protection Agency (EPA) for use against emerging enveloped viral pathogens and can be used during the 2019 novel coronavirus (COVID-19) outbreak. This product list is not exhaustive but can be used by business owners, health professionals, and the public to identify products suitable for use during the COVID-19.
[Click here for COVID-19 Fighting Products](#)
- [NACD Coronavirus Resource Center](#)
NACD is providing the following information to inform chemical distributors about the impacts of coronavirus (COVID-19) and offer resources for emergency preparedness and response.
[Click here for NACD COVID-19 Resources](#)

- [API Pandemic Planning Guide](#)
The oil and natural gas industry directly employs almost 2.6 million Americans, and supports 9.8 million jobs in America or 5.6% of total U.S. employment. Therefore, it is critical that oil and natural gas companies are aware of and plan for the potential threats that could directly or indirectly impact their employees and operations.
[Click here for API Pandemic Planning Guide](#)
- [World Health Organization: Coronavirus disease \(COVID-19\) outbreak](#)
On this website you can find information and guidance from WHO regarding the current outbreak of coronavirus disease (COVID-19) that was first reported from Wuhan, China, on 31 December 2019. Please visit this page for daily updates.
[Click here for WHO COVID-19 Website](#)
- [OSHA Guidance on Preparing Workplaces for an Influenza Pandemic](#)
This guidance is advisory in nature and informational in content. It is not a standard or a regulation, and it neither creates new legal obligations nor alters existing obligations created by OSHA standards or the Occupational Safety and Health Act (OSH Act).
[Click here for OSHA Guidance](#)